

*piffero primo c0000*

*All Through the Night*

*welsh traditional*

Musical score for 'All Through the Night' in 4/4 time, key of D major. The score consists of three staves. The first staff is the melody, starting with a treble clef and a key signature of one sharp (F#). The second and third staves provide harmonic accompaniment with chords and moving lines.

*piffero primo c0001*

*Angels We Have Heard on High*

*french traditional*

Musical score for 'Angels We Have Heard on High' in 4/4 time, key of D major. The score consists of four staves. The first staff is the melody, starting with a treble clef and a key signature of one sharp (F#). The second, third, and fourth staves provide harmonic accompaniment with chords and moving lines.

*piffero primo c0003*

*As With Gladness Men of Old*

*conrad kocher*

Musical score for 'As With Gladness Men of Old' in 4/4 time, key of D major. The score consists of two staves. The first staff is the melody, starting with a treble clef and a key signature of two sharps (F# and C#). The second staff provides harmonic accompaniment with chords and moving lines.

medleys

Christmas Carols

080612

piffero primo c0004

Away In a Manger

german

Musical score for 'Away In a Manger' for piffero primo. The score is in G major (one sharp) and 3/4 time. It consists of two staves of music. The first staff begins with a treble clef and a key signature of one sharp. The melody is primarily composed of eighth and sixteenth notes, with some rests. The second staff continues the melody and includes some chordal accompaniment.

piffero primo c0007

Christmas Is Coming

english traditional

Musical score for 'Christmas Is Coming' for piffero primo. The score is in G major (one sharp) and 4/4 time. It consists of two staves of music. The first staff begins with a treble clef and a key signature of one sharp. The melody is primarily composed of quarter and eighth notes. The second staff continues the melody and includes some chordal accompaniment.

piffero secondo c0008

Christmas Is Coming

english traditional

Musical score for 'Christmas Is Coming' for piffero secondo. The score is in G major (one sharp) and 4/4 time. It consists of two staves of music. The first staff begins with a treble clef and a key signature of one sharp. The melody is primarily composed of quarter and eighth notes. The second staff continues the melody and includes some chordal accompaniment. The instruction '8vo .....' is written below the first staff.

piffero primo c0006

Christ Was Born on Christmas Day

german

Musical score for 'Christ Was Born on Christmas Day' for piffero primo. The score is in G major (one sharp) and 6/8 time. It consists of two staves of music. The first staff begins with a treble clef and a key signature of one sharp. The melody is primarily composed of quarter and eighth notes. The second staff continues the melody and includes some chordal accompaniment.

*piffero primo c0009*

*Deck the Hall*

*welsh traditional*

*piffero secondo c0010*

*Deck the Hall*

*welsh traditional*

*piffero primo c0011*

*Ding Dong Merrily on High*

*french*

*piffero secondo c0012*

*Ding Dong Merrily on High*

*french*

Musical score for 'Ding Dong Merrily on High' in G major and 4/4 time. The score consists of three staves. The first staff begins with a treble clef, a key signature of one sharp (F#), and a 4/4 time signature. The melody is written in a simple, folk-like style with eighth and quarter notes. A double bar line appears after the fourth measure. The second staff continues the melody, and the third staff concludes it with a final double bar line.

*piffero primo c0014*

*The First Noël*

*french (?)*

Musical score for 'The First Noël' in G major and 3/4 time. The score consists of three staves. The first staff begins with a treble clef, a key signature of one sharp (F#), and a 3/4 time signature. The melody is written in a simple, folk-like style with eighth and quarter notes. A double bar line appears after the first measure. The second and third staves continue the melody, with the third staff ending with a final double bar line.

*piffero secondo c0015*

*The First Noël*

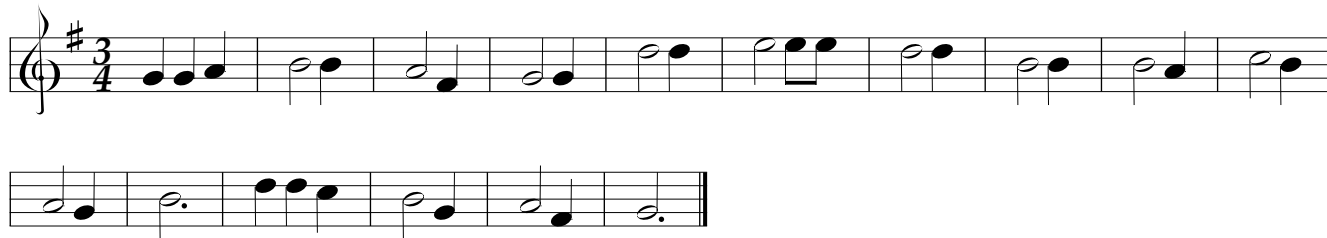
*french (?)*

Musical score for 'The First Noël' in G major and 3/4 time. The score consists of four staves. The first staff begins with a treble clef, a key signature of one sharp (F#), and a 3/4 time signature. The melody is written in a simple, folk-like style with eighth and quarter notes. A double bar line appears after the first measure. The second, third, and fourth staves continue the melody, with the fourth staff ending with a final double bar line.

*piffero primo c0016*

*The Friendly Beasts*

*english 12th century*



*piffero secondo c0017*

*The Friendly Beasts*

*english 12th century*



*piffero primo c0043*

*God Rest Ye Merry Gentlemen*

*english*



*piffero primo c0044*

*Good Christian Men Rejoice*

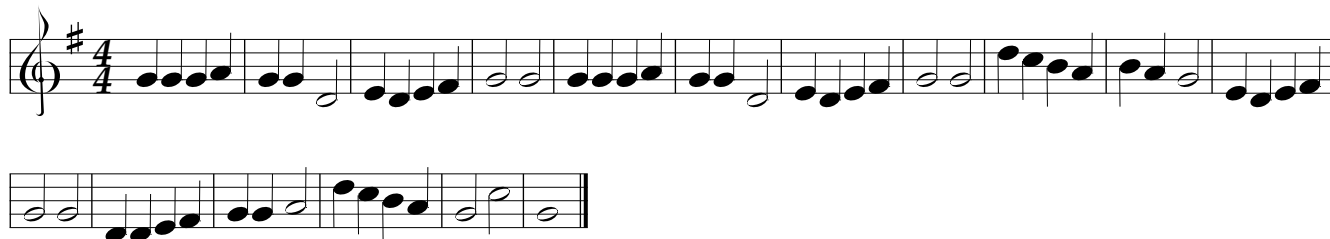
*german 14th cent*



*piffero primo c0046*

*Good King Wenceslas*

*latin carol, 16th cent*



*piffero primo c0045*

*Go Tell It On The Mountain*

*spiritual*



*piffero primo c0047*

*Hark the Herald Angels Sing*

*felix mendelssohn*



*piffero primo c0048*

*Here We Come A-Caroling*

*english wassail song*



piffero primo c0058

I Heard The Bells On Christmas Day

j baptiste calkin



piffero primo c0049

It Came Upon a Midnight Clear

richard s. willis



piffero primo c0050

Jingle Bells

james pierpont



piffero primo c0051

Joy To the World

geo f handel



piffero primo c0013

O Come All Ye Faithful

traditional

Musical notation for 'O Come All Ye Faithful' in G major and 4/4 time. The score consists of three staves. The first staff begins with a treble clef, a key signature of one sharp (F#), and a 4/4 time signature. The melody is written in a simple, traditional style with quarter and eighth notes.

piffero primo c0052

O Come O Come Emmanuel

french

Musical notation for 'O Come O Come Emmanuel' in G major and 4/4 time. The score consists of two staves. The melody is characterized by a more rhythmic and melodic style, featuring eighth and sixteenth notes.

piffero primo c0053

O Holy Night

adolphe adam

Musical notation for 'O Holy Night' in G major and 6/8 time. The score consists of four staves. The melody is highly melodic and expressive, featuring many slurs and ornaments, characteristic of Adolphe Adam's style.



piffero primo c0054

O Little Town of Bethlehem

lewis h redner

Musical notation for 'O Little Town of Bethlehem' in G major, 4/4 time. The score consists of two staves. The first staff contains the main melody, and the second staff contains a lower accompaniment line. The piece concludes with a double bar line.

piffero primo c0002

Pat-A-Pan

french

Musical notation for 'Pat-A-Pan' in G major, 4/4 time. The score consists of two staves. The first staff contains the main melody, and the second staff contains a lower accompaniment line. The piece concludes with a double bar line.

piffero primo c0055

Silent Night

franz gruber

Musical notation for 'Silent Night' in G major, 3/4 time. The score consists of two staves. The first staff contains the main melody, and the second staff contains a lower accompaniment line. The piece concludes with a double bar line.

piffero primo c0005

Un Flambeau, Jeanette Isabelle

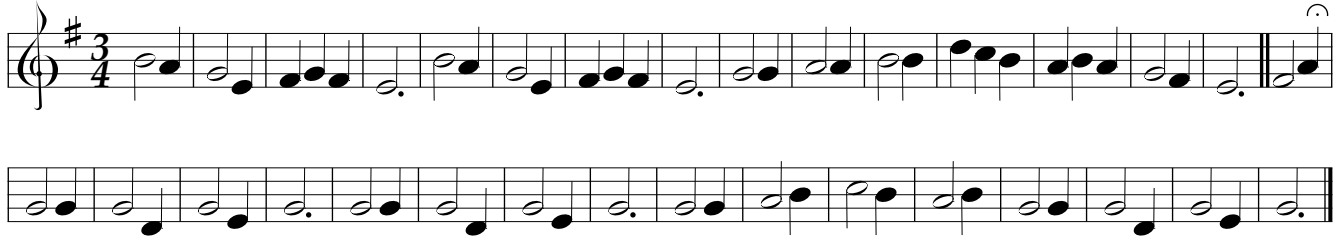
french

Musical notation for 'Un Flambeau, Jeanette Isabelle' in G major, 3/8 time. The score consists of three staves. The first staff contains the main melody, and the second and third staves contain lower accompaniment lines. The piece concludes with a double bar line.

*piffero primo c0056*

*We Three Kings*

*john h hopkins jr*



*piffero primo c0057*

*We Wish You a Merry Christmas*

*english*

