

(going on tune)

*piffero primo b0001*

*Yankee Doodle Ancient*

*safd 036*

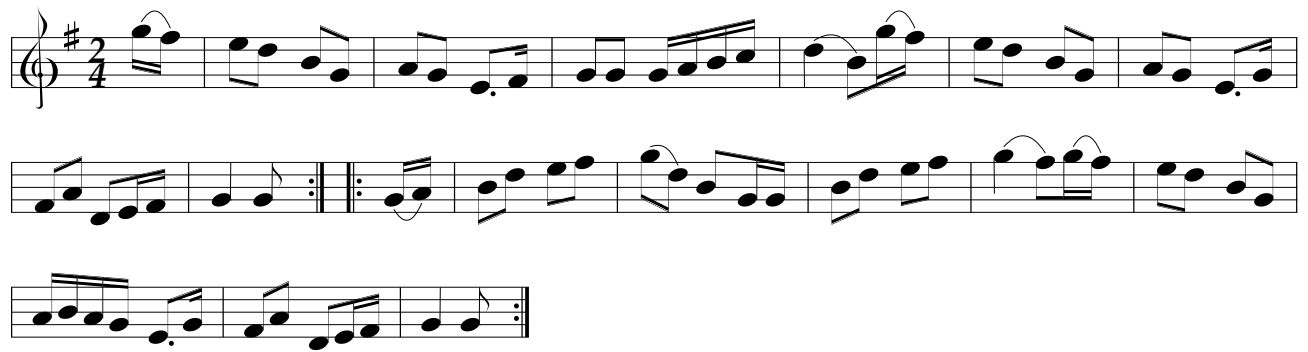


(going off tune)

*piffero primo b0056*

*The Girl I Left Behind Me*

*safd 074*



(the standpiece itself)

*piffero primo b0006*

*Norman Toy*

*cushing*

Musical notation for Norman Toy, featuring a treble clef, a key signature of one sharp (F#), and a 2/4 time signature. The piece begins with a 7-measure rest. The melody consists of eighth and sixteenth notes, with a repeat sign after the first two measures. The notation is spread across three staves.

*piffero primo b0024*

*La Belle Cathrine*

*safd 015*

Musical notation for La Belle Cathrine, featuring a treble clef, a key signature of one sharp (F#), and a 2/4 time signature. The piece begins with a 7-measure rest. The melody is characterized by sixteenth-note runs and eighth notes, with a repeat sign after the first two measures. The notation is spread across three staves.

*piffero primo b0015*

*York Fusiliers*

*greenwood 1780*

Musical notation for York Fusiliers, featuring a treble clef, a key signature of one sharp (F#), and a 2/4 time signature. The piece begins with a 7-measure rest. The melody includes sixteenth-note runs, eighth notes, and a trill (tr) in the third measure of the second staff. The notation is spread across four staves, with first and second endings marked at the end.

8 Bar Drum Bridge

*piffero primo b0076*

*The Green Cockade*

*cfid bk 1*

Musical notation for 'The Green Cockade' in G major, 6/8 time. The piece consists of three staves. The first staff contains the first eight bars. The second staff contains the next eight bars, including a repeat sign. The third staff contains the final two bars of the piece.

*piffero primo b0079*

*The Seven Stars*

*rutherford 1756*

Musical notation for 'The Seven Stars' in G major, 6/8 time. The piece consists of three staves. The first staff contains the first eight bars. The second staff contains the next eight bars, including a repeat sign and a trill (tr) over the eighth bar. The third staff contains the final two bars of the piece.

*piffero primo a0651*

*Little Tea*

*cfid bk2, mod*

Musical notation for 'Little Tea' in G major, 6/8 time. The piece consists of three staves. The first staff contains the first eight bars. The second staff contains the next eight bars, including a repeat sign. The third staff contains the final two bars of the piece.